

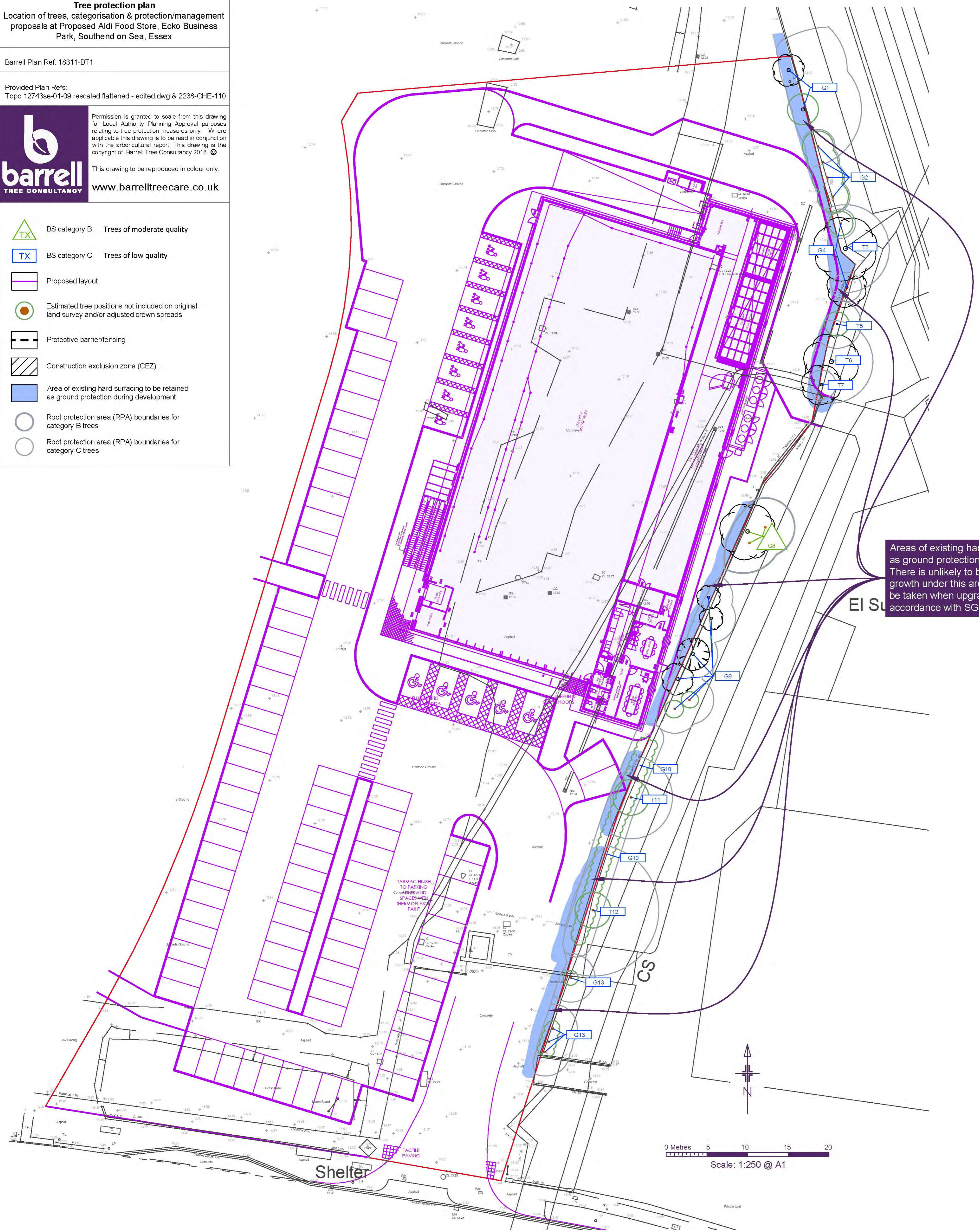
Tree protection plan
Location of trees, categorisation & protection/management proposals at Proposed Aldi Food Store, Ecko Business Park, Southend on Sea, Essex

Barrell Plan Ref: 18311-BT1
Provided Plan Refs: Topo 12743se-01-09 rescaled flattened - edited.dwg & 2238-CHE-110



Permission is granted to scale from this drawing for Local Authority Planning Approval purposes relating to tree protection measures only. Where applicable this drawing is to be read in conjunction with the arboricultural report. This drawing is the copyright of Barrell Tree Consultancy 2018. ©
This drawing to be reproduced in colour only.
www.barrelltreecare.co.uk

-  BS category B Trees of moderate quality
-  BS category C Trees of low quality
-  Proposed layout
-  Estimated tree positions not included on original land survey and/or adjusted crown spreads
-  Protective barrier/fencing
-  Construction exclusion zone (CEZ)
-  Area of existing hard surfacing to be retained as ground protection during development
-  Root protection area (RPA) boundaries for category B trees
-  Root protection area (RPA) boundaries for category C trees



Areas of existing hard surfacing to be retained as ground protection during development. There is unlikely to be any significant root growth under this area, however care should be taken when upgrading and landscaping in accordance with SGN 8, SGN 9, and SGN 12.

Tree schedule

Tree No	Species	Category	RPA Radius	Tree Works
All retained trees				Carry out safety check and lift over site to 3-4m as necessary.
G1	Sycamore	C	7.2	-
G2	Sycamore	C	2.1	-
T3	Sycamore	C	5.4	Offsite, unable to access base, previously reduced to 2m
G4	Sycamore	C	1.8	-
T5	Lilac	C	3	-
T6	Sycamore	C	5.1	-
T7	Birch	C	1.8	-
G8	Ash	B	3.6	-
G9	Sycamore, cypress, ash, Swedish whitebeam	C	3	-
G10	Ash, sycamore, elder, birch	C	1.8	-
T11	Ash	C	5.1	-
T12	Sycamore	C	8.1	-
G13	Ash, sycamore	C	3	-

SGN 8 Removing surfacing and structures in RPAs



Always:

- have a pre-commencement meeting with the tree consultant before development starts
- use the tree consultant to supervise work in RPAs
- minimise damage to roots and disturbance to soil in RPAs




SGN 12 Landscaping in RPAs



Always:

- use the tree consultant to supervise work in RPAs
- avoid raising ground levels within 1m of the trunks of retained trees



SGN 9 Installing/upgrading surfacing in RPAs



Always:

- use the tree consultant to supervise work in RPAs
- minimise damage to roots and disturbance to soil in RPAs
- minimise excavation when installing or upgrading surfacing in RPAs



How to use plan

More detailed guidance on each Site Guidance Note (SGN) can be found in a printed hard copy compilation of all the SGNs, issued to the Site Manager at the pre-commencement site meeting. (Note: This should be retained on site throughout the duration of works). Additionally, an electronic pdf compilation of all the SGNs, was submitted with this drawing to the local planning authority and the client. Alternatively, a pdf of each SGN can be downloaded by:

- clicking the image links in the electronic pdf version of this plan;
- holding a mobile phone QR (Quick Response) code reader over the QR code in the paper version of this plan; or,
- visiting our website at <https://www.barrelltreecare.co.uk/resources/technical-guidance>